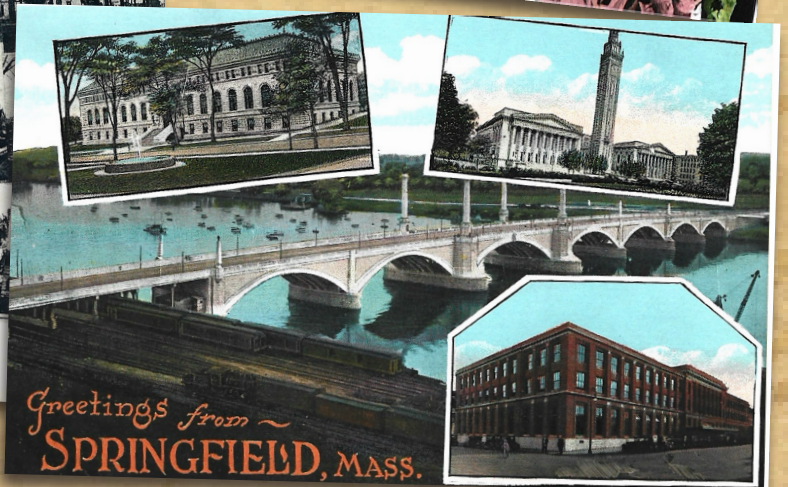
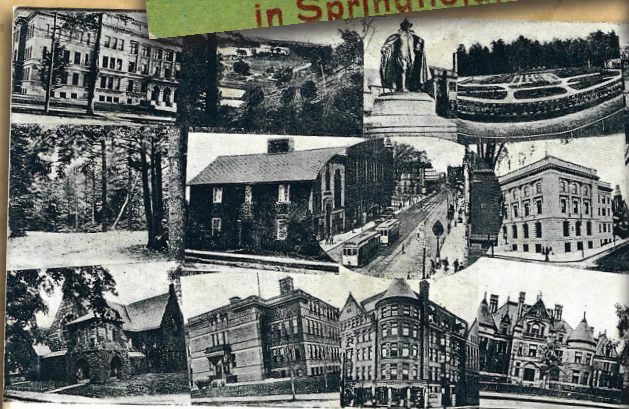


Historic Springfield Postcard Archive

150+ YEARS OF POSTCARD HISTORY

Presented by the Springfield Preservation Trust









About the Archive

The Historic Springfield Postcard Archive, presented by the Springfield Preservation Trust, is comprised of nearly 1,800 historic postcards dating as far back as the 1870s, featuring architecture, neighborhoods, landscapes, public art, industry, transportation, culture, and life in Springfield, Massachusetts over the decades.

The archive features postcards from two local collectors, Jim Boone and John Zebb. Digitization of the physical archive was made possible by the Photographic Archiving Committee of the Springfield Preservation Trust, with leadership and contributions from Committee Chair Marilyn Sutin; collectors Jim Boone, John Zebb, Paul J. Meagher, and Ralph Slate; President Erica Swallow; and digitization and restoration specialist Devon McDaniel. The digitization project was generously funded by John Zebb, in collaboration with Digital Commonwealth and the Boston Public Library.

Find the postcard archive online at springfieldpreservation.org/postcards.

 springfieldpreservation.org
 advocacy@springfieldpreservation.org
 [/PreserveSpringfield](https://www.facebook.com/PreserveSpringfield)
 [@springfieldpreservation](https://www.instagram.com/springfieldpreservation)



An Early History of Postcards in America

The U.S. Postal Service introduced the first official postcards in 1873, with a postage of one cent per postcard. These early cards featured a small space on the front of each card for a message, and the back of the card was reserved solely for the address.

In 1898, private companies were allowed to produce postcards, expanding their designs and popularity. In the archive, you will see both local prints from Massachusetts, as well as prints from national and international companies.

In March 1907, the U.S. Post Office Department officially changed its regulations to allow the back of the postcard to be divided into two sections—one for the address and one for a personal message. This change mirrored similar postal reforms that had already taken place in Europe (notably in Great Britain in 1902).

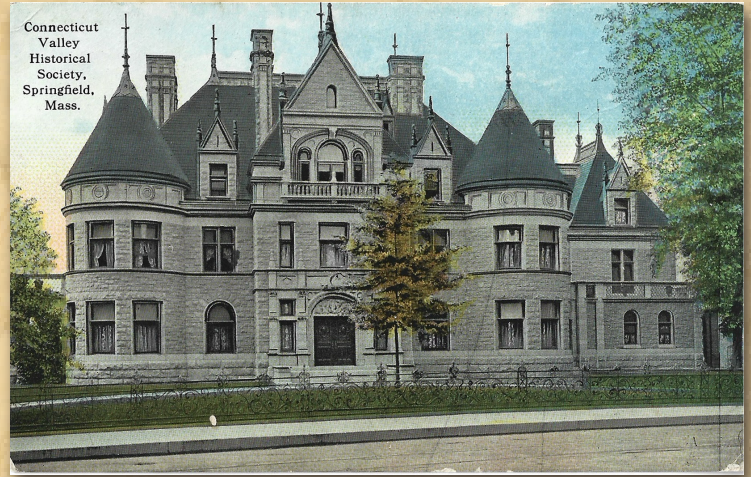
The government's decision to allow divided backs was likely influenced by the growing popularity of postcards and the demand for more space to write messages. Private postcard manufacturers quickly adopted the new design, which became the standard format. This regulatory change contributed to the "Golden Age of Postcards" (1907-1915), a period when sending and collecting postcards became a widespread cultural phenomenon in America.

The "divided back" design remains a standard feature of postcards today.

Architecture

Explore a variety of architectural styles for buildings including banks, colleges, fire stations, hospitals, libraries, municipal buildings, museums, police stations, post offices, schools, and more.

(Continued on next page.)



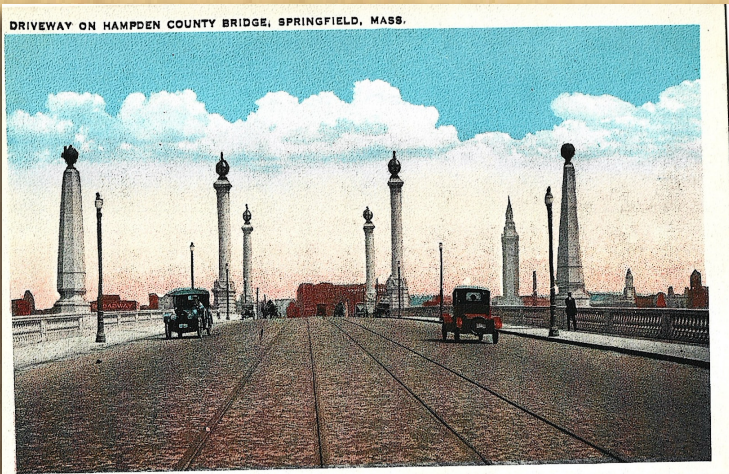
Connecticut Valley Historical Society, Springfield, Mass.



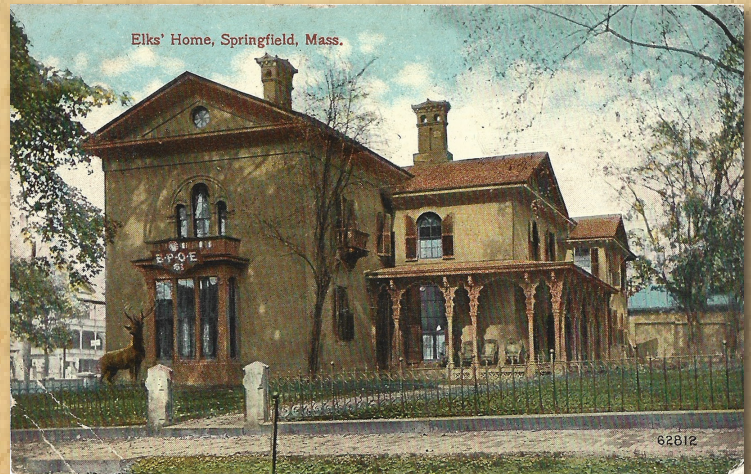
One of the first all solid Concrete Dwellings cast on the Camp Grounds, Springfield, Mass., by Lambie Steel Patented House Forms, One Story at One Cast.



Church of Immaculate Conception, Indian Orchard, Mass.



DRIVEWAY ON HAMPDEN COUNTY BRIDGE, SPRINGFIELD, MASS.

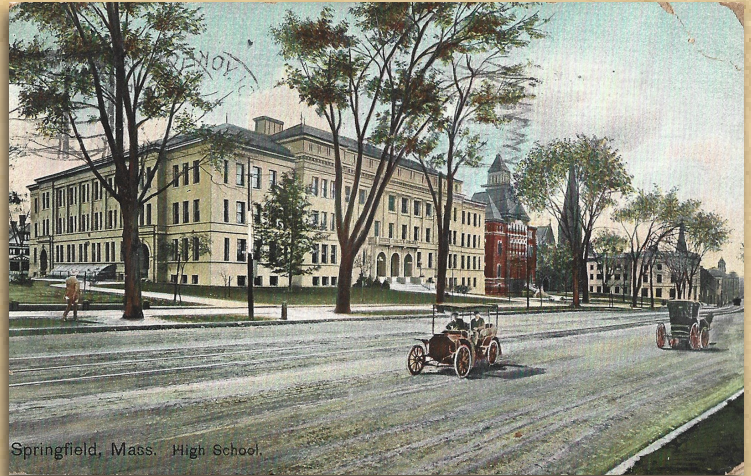


Elks' Home, Springfield, Mass.

Architecture



SPRINGFIELD, MASS. The city's largest "Skyscraper." MYRICK BUILDING as viewed from Forbes & Wallace's Restaurant
A 392



Springfield, Mass. High School.



POST OFFICE, SPRINGFIELD, MASS.

29725

SPRINGFIELD'S UNSURPASSED MUNICIPAL GROUP has risen from the ashes of the old City Hall fire started by a Monkey upsetting a lamp. SHALL THE MONKEY BE BLAMED OR PRAISED?

A grander Chicago arose from her great fire, started by the lantern kicked over by a cow.

WILLIAM G. McKECHNIE, one of the Municipal Group Commissioners, speaking at the Commercial Travelers Club said:

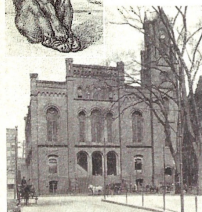
"This case resembles that FAMOUS SQUIB CASE, in that the commercial travelers were giving a fair in the hall at the time. There were many booths around the hall, and one of these booths was occupied by a monkey. During the course of the fair the monkey upset the lamp, setting the hall on fire.



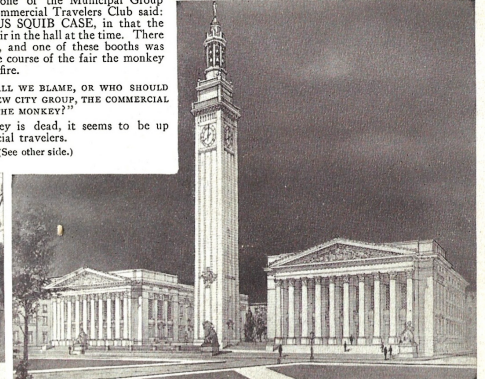
"SO WHO SHALL WE BLAME, OR WHO SHOULD PAY FOR THE NEW CITY GROUP, THE COMMERCIAL TRAVELERS OR THE MONKEY?"

As the monkey is dead, it seems to be up to the commercial travelers.

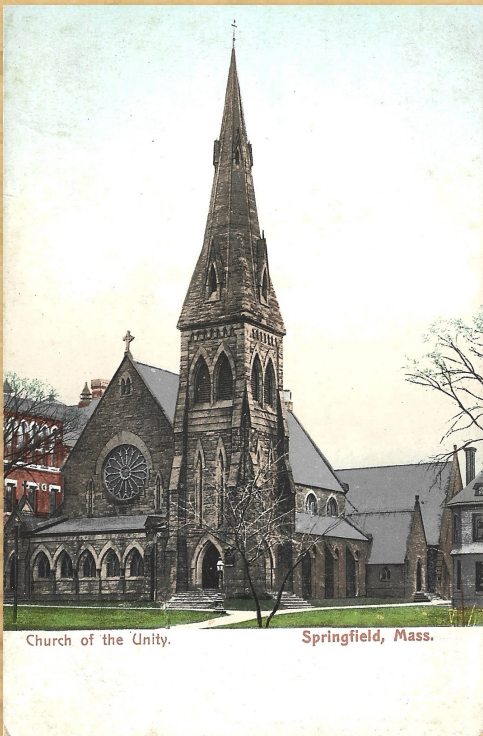
(See other side.)



OLD CITY HALL
A landmark for fifty years.



MUNICIPAL GROUP, SPRINGFIELD, MASS. Finest civic group in America.
Erected on site of old City Hall. A-663



Church of the Unity.

Springfield, Mass.



St. Michael's Cathedral,
Springfield, Mass.

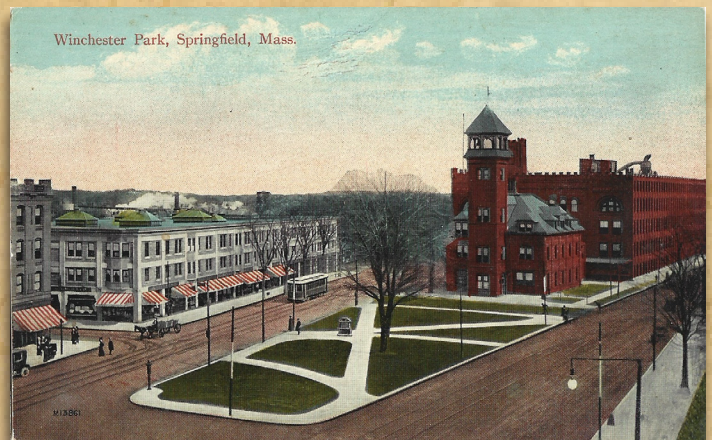
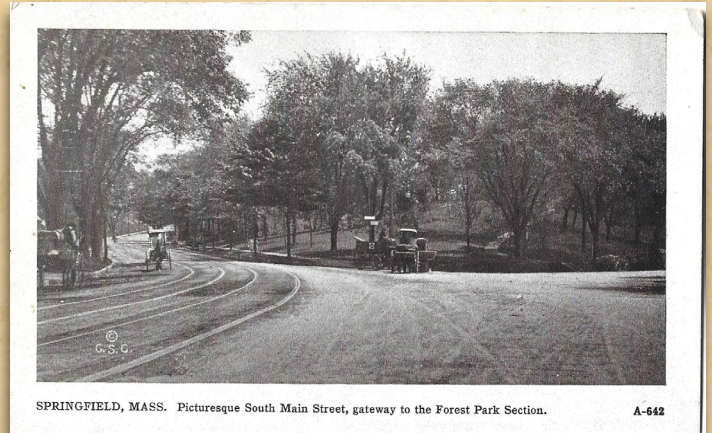
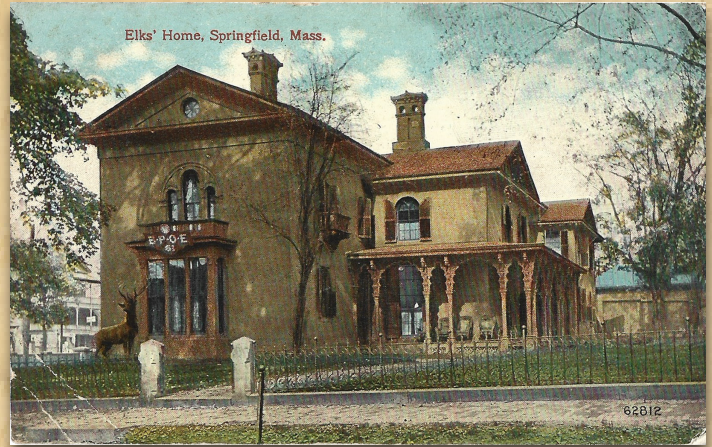


Bridge St. & Trinity Meth. Episcopal
Church, Springfield, Mass.

Neighborhoods

Travel back in time to the homes and neighborhoods which led to Springfield being named the “City of Homes.”

Neighborhoods which are now designated as local historic districts—such as McKnight Historic District and Forest Park Heights Historic District—are presented in their full historic glory.



Become a Member

SPT relies on the support of our members through annual dues. These funds help us continue the important work of advocating for the historic neighborhoods and landscapes in Springfield. Please support the Springfield Preservation Trust by becoming a member today. Thank You!

COLONIAL \$30
discount on all SPT events

VICTORIAN \$60
discounts on all SPT events
two free tour passes

ITALIANATE \$120
discounts on all SPT events
three free tour passes

GREEK REVIVAL \$200
discounts on all SPT events
four free tour passes
listing in the SPT quarterly
newsletter

TUDOR \$500
discounts on all SPT events
six free tour passes
listing in the quarterly SPT
newsletter
listing on the SPT website

LEADERSHIP CIRCLE \$1,000
discounts on all SPT events,
six free tour passes
listing in the quarterly SPT

Fill out this Membership form and mail it with payment to:

Springfield Preservation Trust
74 Walnut Street
Springfield, MA 01105

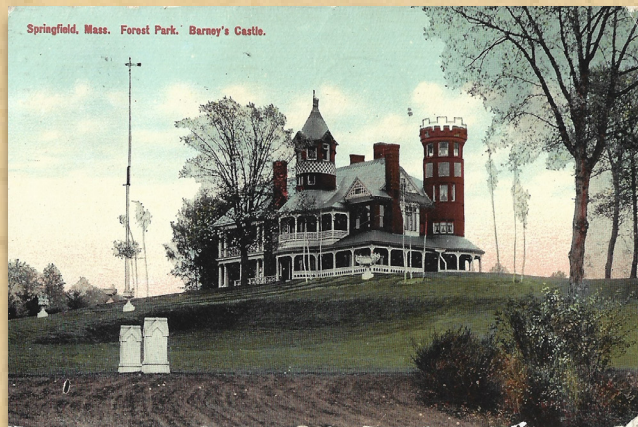
Contact Information
First Name
Last Name
Email
Phone
Billing Address
Country
Address
City
State
ZIP Code
Show my support by making this a recurring donation <input type="checkbox"/>
Payment Information
Debit Card
Credit Card
Savings
Checking
Credit or debit card

OR become a member online at:
springfieldpreservation.org/membership/

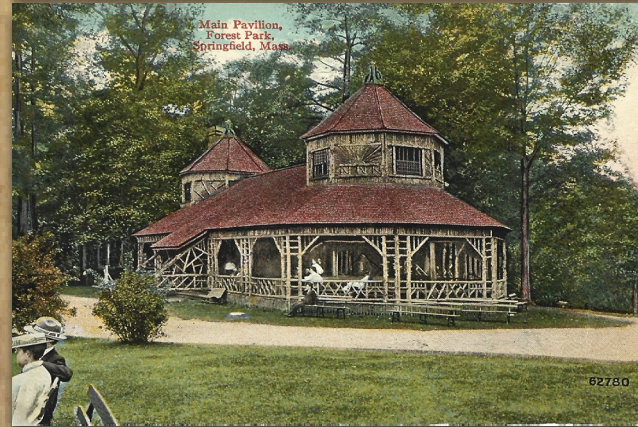
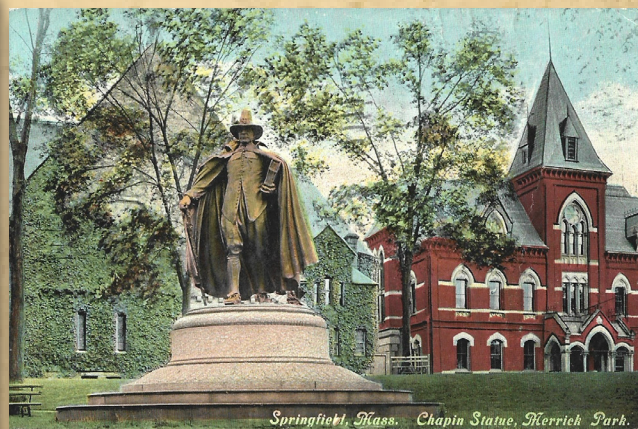
Landscapes & Public Art

For a bustling city, Springfield and its neighborhoods were well-designed with green space and leisure in mind. The city—both now and in its past—boasts many beautiful landscapes and public art installations.

Explore the parks, cemeteries, statues, and various aerial and panoramic views from elevated viewpoints including from the Campanile and Arsenal Tower.



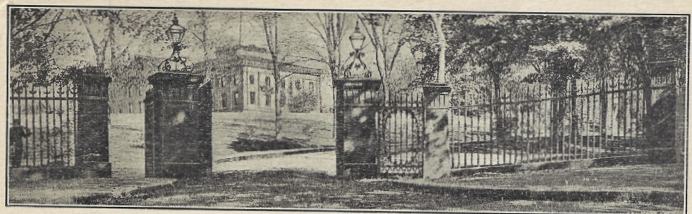
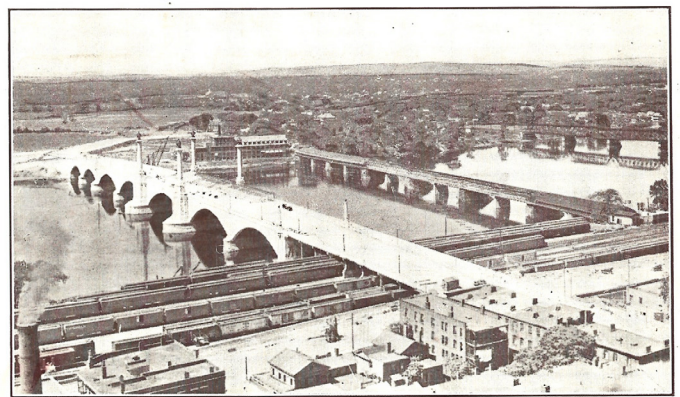
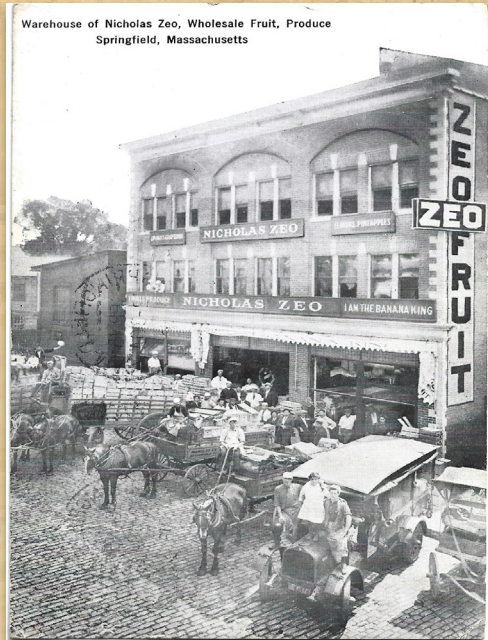
Built in 1890, Pecousic Villa was the estate of Everett Barney, inventor of the clip-on ice skate. Donated to the City of Springfield along with 178 acres and other buildings, the home was demolished in 1959 to build highway I-91. It is one of Springfield's greatest architectural losses. (Circa 1915)



Industry & Transportation

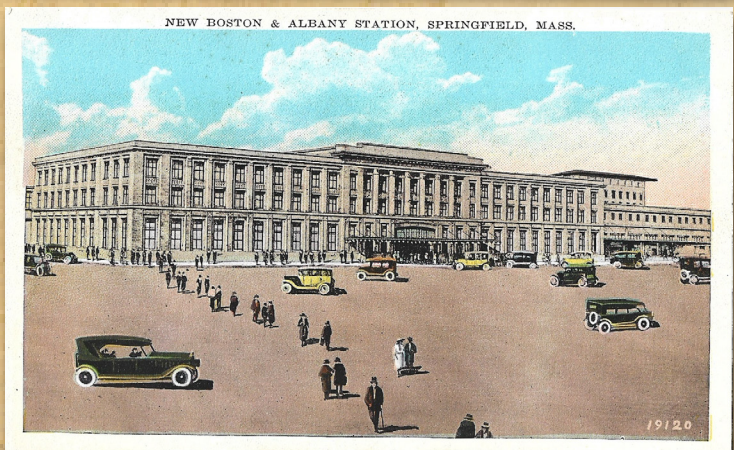
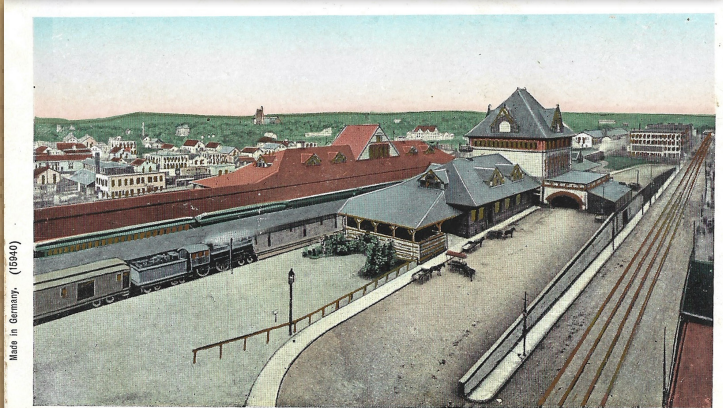
Get a sense for Springfield's industrial past which made it a central production center for the country during the Second Industrial Revolution (1870-1914).

Explore the Armory, Watershops, insurance companies, Milton Bradley, Smith & Wesson, and utilities, as well as the transportation methods which made industry and commerce possible—including, river ships, river bridges, railroad stations, and trolley cars.



Were half the power that fills the world with terror,
 Were half the wealth bestowed on camps and courts,
 Given to redeem the human mind from error,
 There were no need of arsenals and forts.

From the poem "The Arsenal at Springfield, Mass."
 By HENRY WADSWORTH LONGFELLOW



Made in Germany. (1894)

Poli's Theatre, Springfield, Mass.



GEORGE WALTER VINCENT SMITH COLLECTION. ART MUSEUM, SPRINGFIELD, MASS.

I like the folks here



in Springfield, Mass

Culture & Life

Peak into historic life and culture in Springfield, by exploring cultural staples and lifestyle activities in the archive. Explore building interiors to see how Springfield residents lived throughout the ages. Or tarry through memory-making locations, including boating clubs, movie theaters, and various social clubs, including Nyasset Club and the Women's Club.

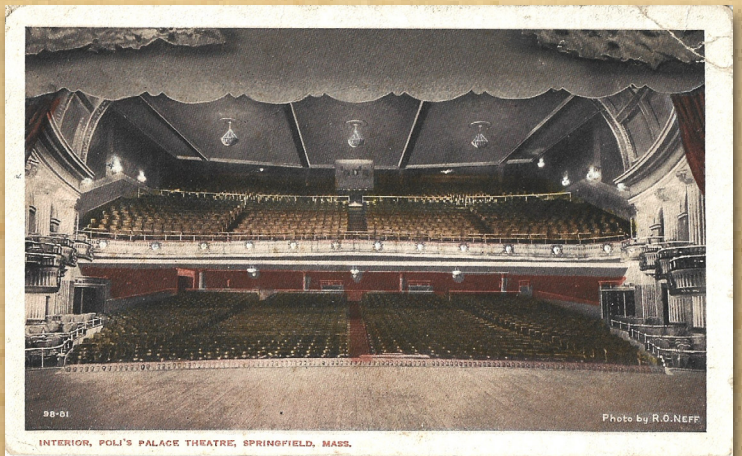


HOTEL KIMBALL
CORNER CHESTNUT AND BRIDGE STREETS
Springfield, Mass.

In process of construction. To be opened in Summer of 1910. Quiet hotel in the heart of the city. Fireproof construction.



SPRINGFIELD, MASS. UNITED STATES ARMORY.
Published by Johnson's Bookstore, Springfield, Mass. 5655



INTERIOR, POLI'S PALACE THEATRE, SPRINGFIELD, MASS.



About SPT

The Springfield Preservation Trust (SPT) is a volunteer-based, 501(c)(3) non-profit that has been advocating for historic preservation in Springfield for over 50 years. The organization focuses its efforts on raising awareness of historic preservation through its annual Preservation Awards, Historic Homes Tours, Virtual Tours, Walking Tours, and Most Endangered Historic Resources List. When a historic place is threatened by demolition, SPT advocates for preservation by contacting elected officials, other important stakeholders and local media to sway decisions.

SPT History

In 1972, a group of concerned Springfield residents created the Springfield Preservation Trust as a reaction to the destruction of historic buildings. In the years that followed, the Springfield Preservation Trust purchased key properties to preserve, and encouraged others to do the same. In time, the situation stabilized and the Springfield Preservation Trust was able to shift its focus to helping residents learn about preserving and maintaining their historic properties. In more recent years, the Springfield Preservation Trust has been known for its vibrant offering of programming, including walking tours, historic home tours, and virtual lectures.

As the only non-profit/non-government advocate group for historic preservation in Springfield, the Springfield Preservation Trust continues to be the voice of historic preservation, advocating for Springfield's historic places.

Interested in Getting Involved?

The Springfield Preservation Trust is a non-profit focused on historic preservation in Springfield. Join us in this rewarding work! Reach out:

Springfield Preservation Trust
74 Walnut Street
Springfield, MA 01108

Interested in seeing the full postcard archive?

Find them online:

springfieldpreservation.org/postcards

